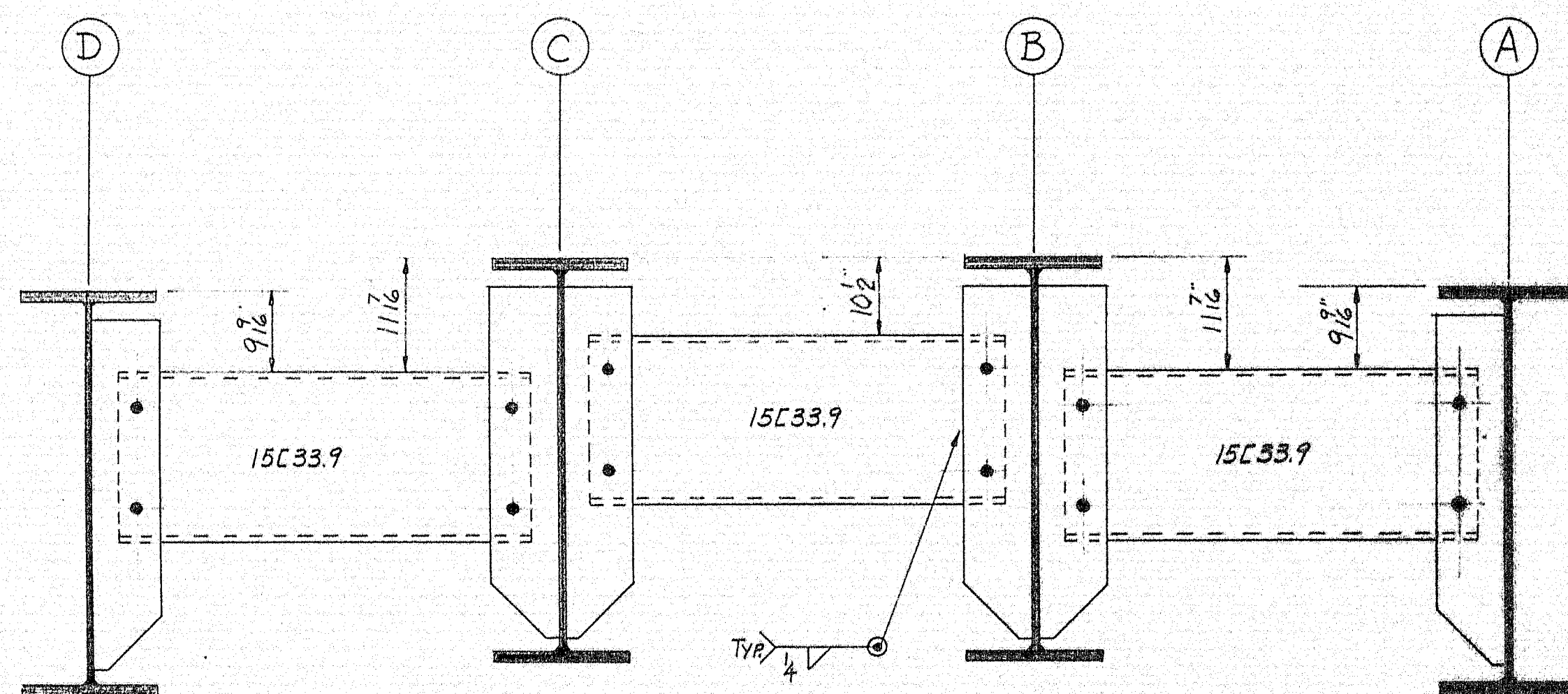
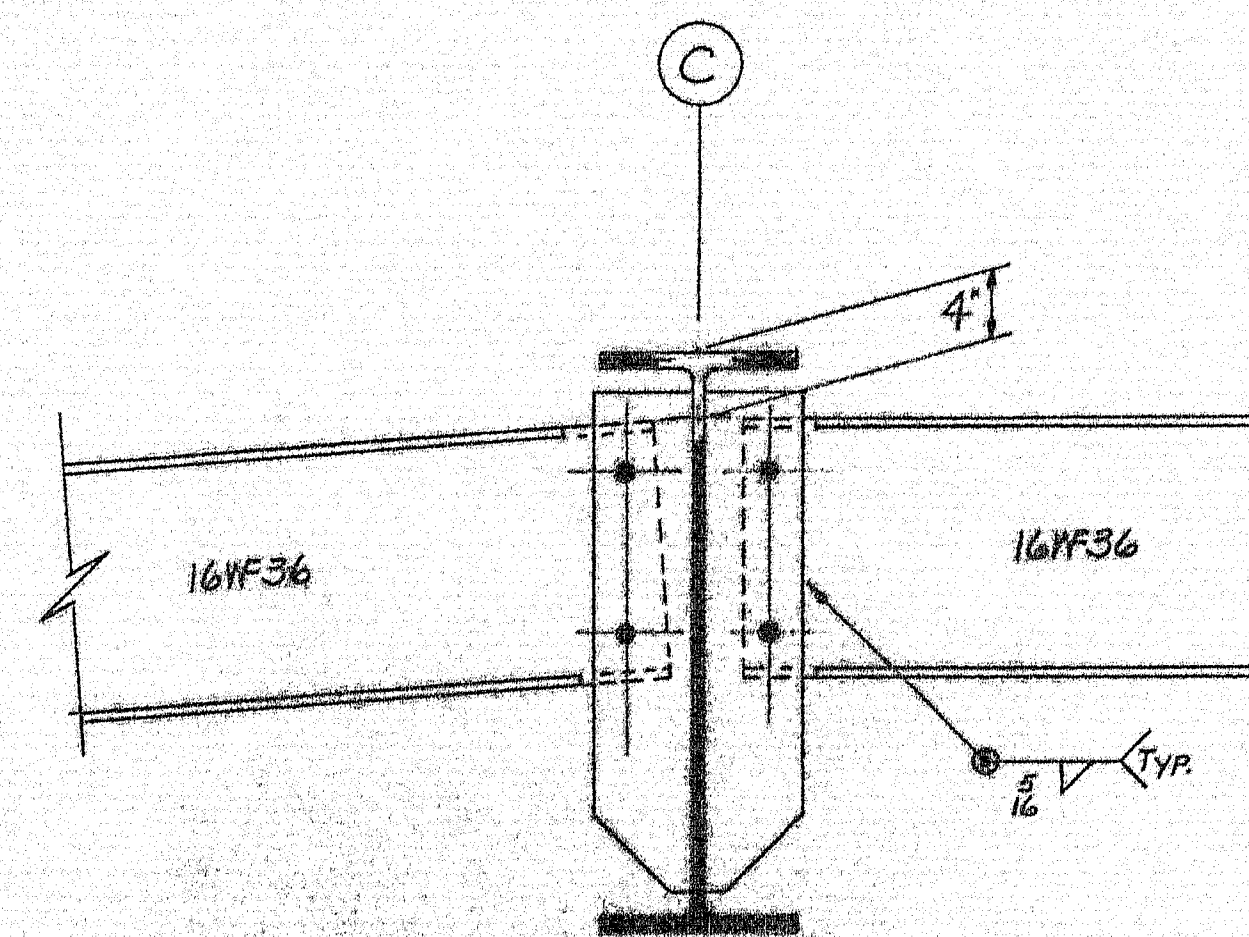


FRAMING PLAN



DIAPHRAGM CONNECTION



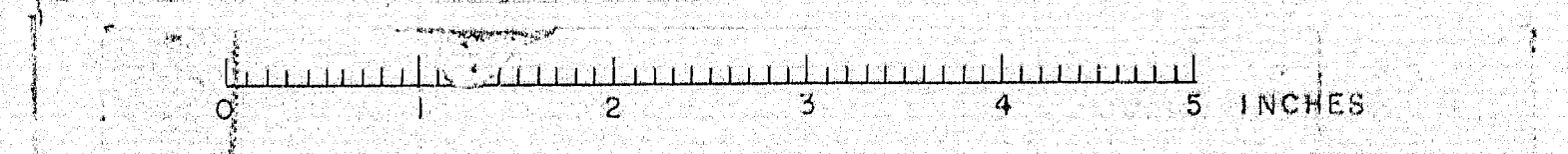
DIAPHRAGM CONNECTION

SHOP CONNECTIONS: E70 LOW-HYDROGEN  
FIELD CONNECTIONS: 3/8" H.S. BOLTS & WELD  
HOLES: 1/8" U.N.  
PAINT: STATE OF MAINE SPEC'S.

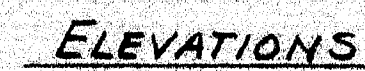
Proj. No. I-95-9(41)266

FRAMING PLAN				Bancroft & Martin Inc. Brewer, Maine	
PRINT	ISSUE			CRYSTAL STATION ROAD BRIDGE	
3	S.H.C.	1-30-67		CRYSTAL & SHERMAN, MAINE	
3	CUST.	1-30-67		CUSTOMER REED & REED	
2	SHOP	1-30-67		DESIGNER M. S. H. C.	
3	FA.	1-19-67		ORDER VERBAL	
DRAWN	1-3-67	C.J.M.		DWG. B66-247-E1	
REVISION					
REVISION					

100-145



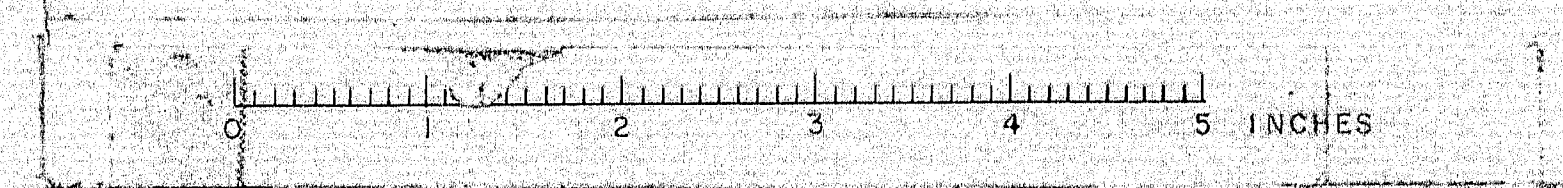




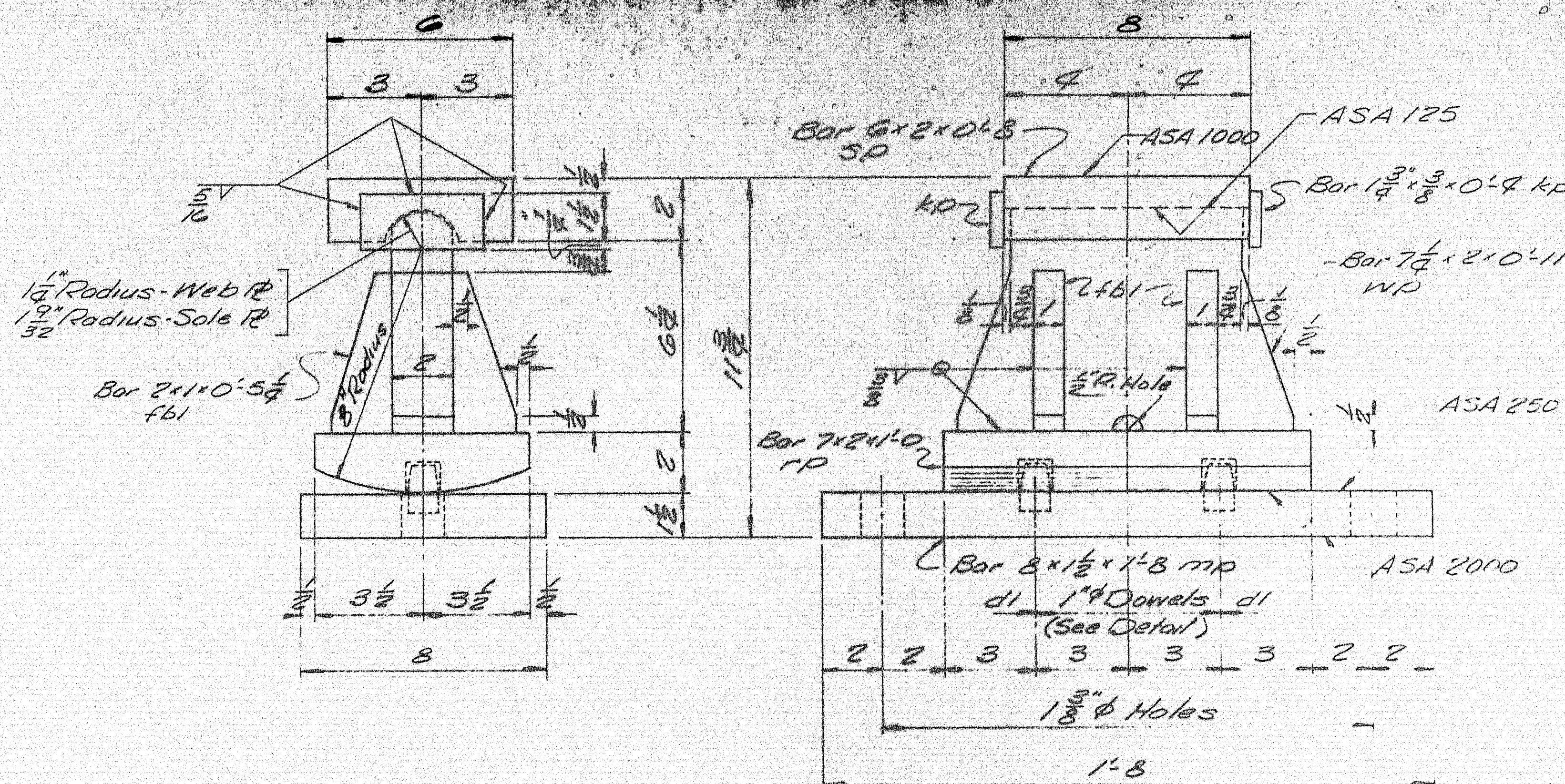
PROJ. No. I-95-9(41) 266

PRINT ISSUE		ELEVATIONS	
		<i>Bancroft &amp; Martin Inc.</i> <i>Brewer, Maine</i>	
3	S.H.C. 1-30-67	CRYSTAL STATION ROAD BRIDGE	
3	CUST. 1-30-67	CRYSTAL & SHERMAN, MAINE	
2	SHOP 1-30-67		
3	FA. 1-19-67	CUSTOMER <i>REED &amp; REED</i>	
DRAWN	1-9-67 C.J.M.	DESIGNER <i>M.S.H.C.</i>	
REVISION			
REVISION			
REVISION		ORDER <i>VEREAL</i>	DWG. <i>B66-247-E2</i>

100-146

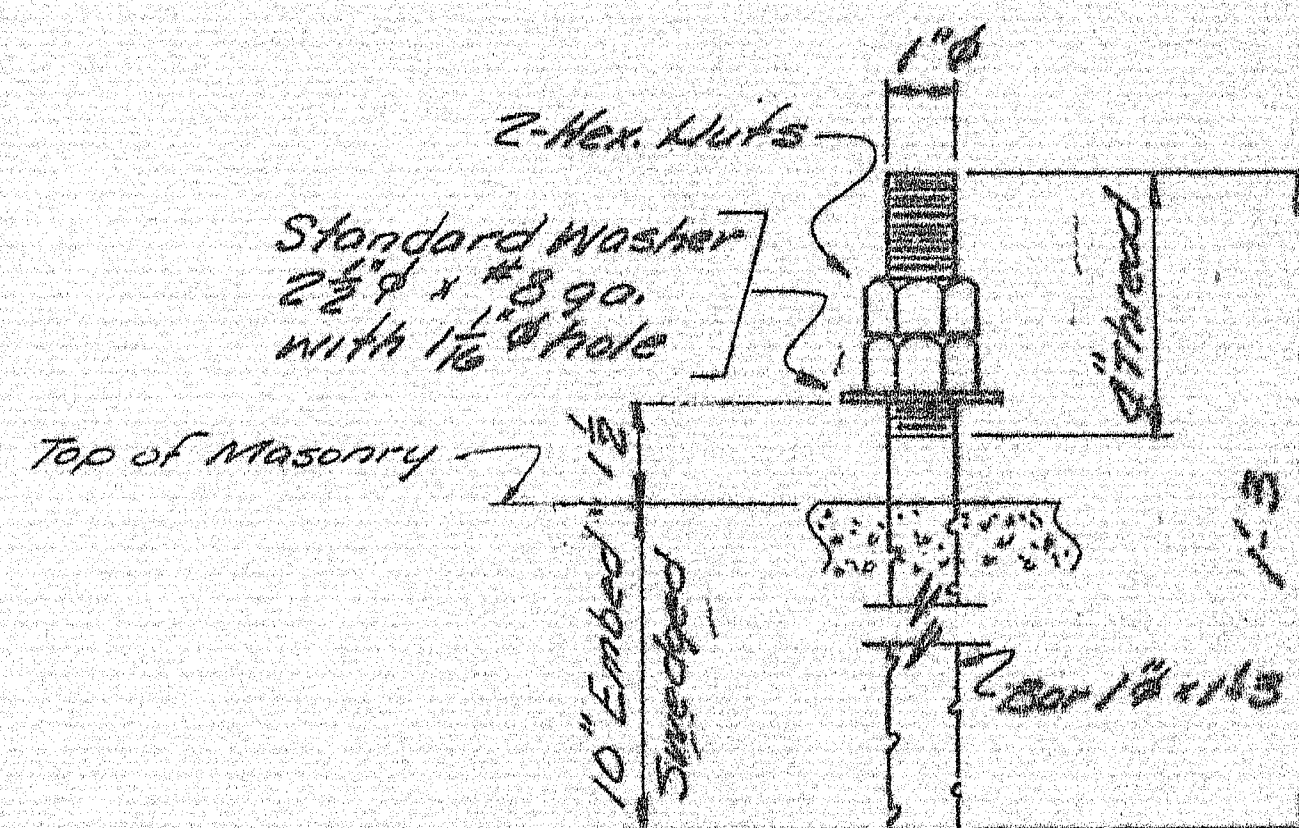






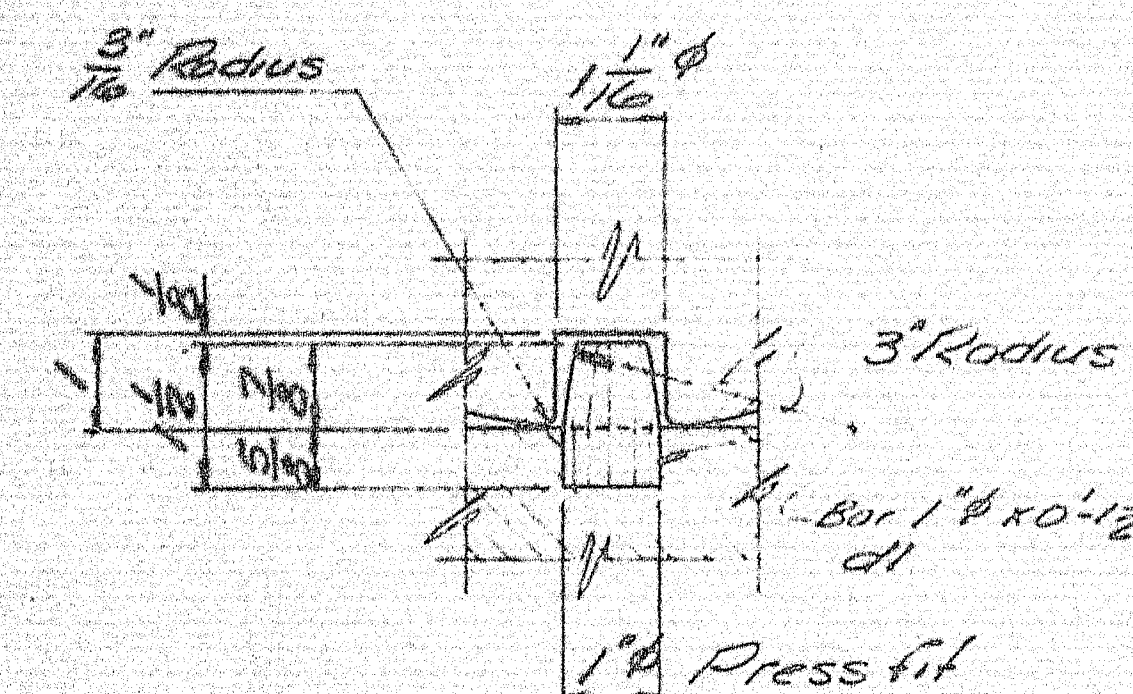
### EXPANSION PEDESTAL EPC-2

8 - REQ'D.



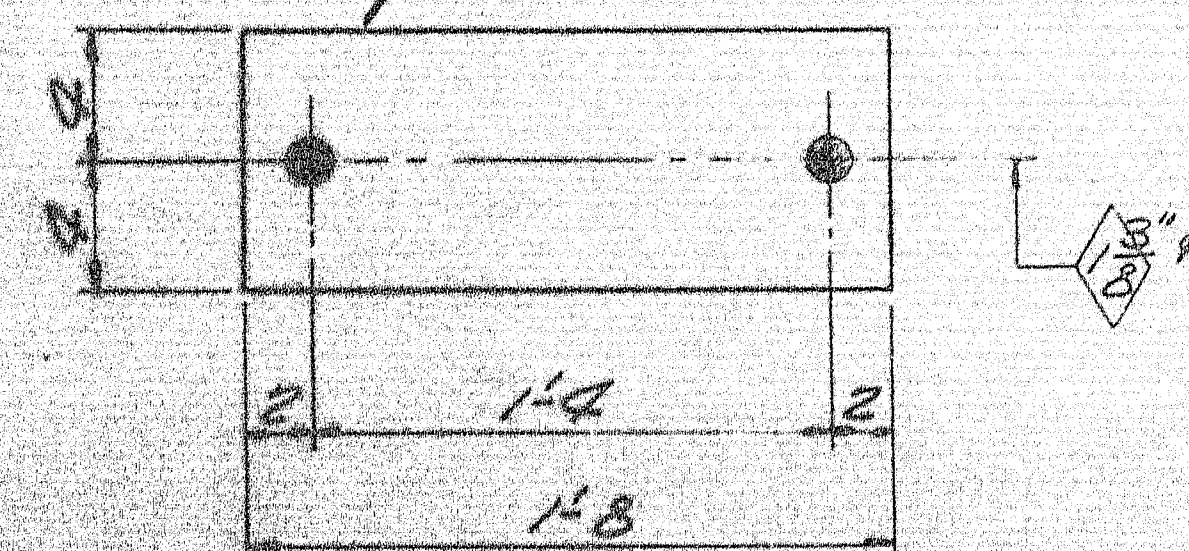
### ANCHOR BOLT ABI

16 - REQ'D.



### DOWEL DETAIL

Fabco Pad "SA47"  
8 x 1 1/2 x 1.8



### FABCO "SA47" PAD

FPI 8 - REQ'D.

### PAINT NOTE:

No paint on top of sole plates "SP" and 1" down from top on sides, coat with boiled linseed oil.  
No paint on surface with ASA 125 finish, coat with mixture of white lead and tallow.  
No paint on Anchor bolts - oil free.

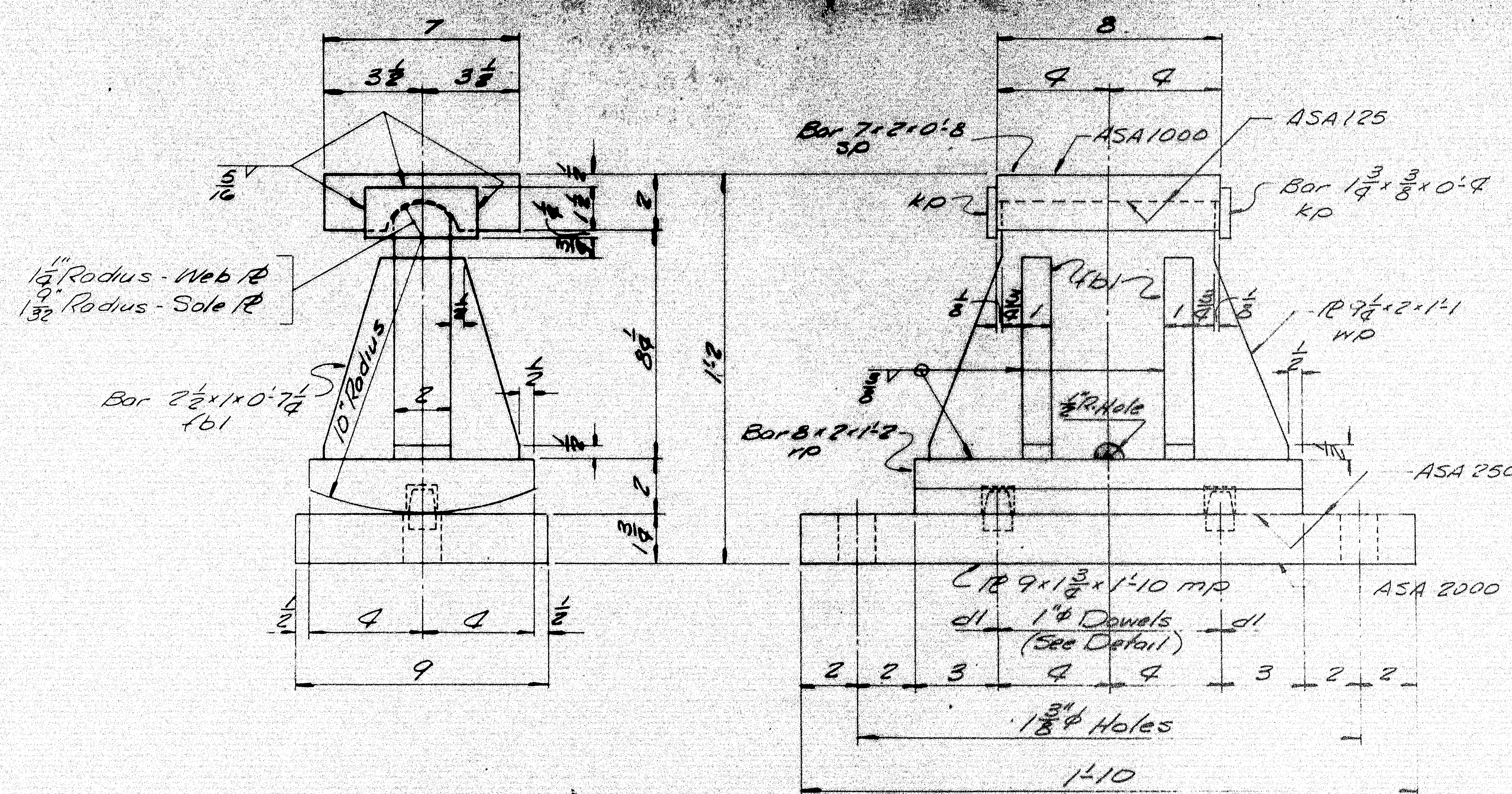
SHIP		BILL OF MATERIAL				DWG. NO. B66-247
MARK	NO.	MARK	SHAPE	LENGTH	WT.	REMARKS
EPC2	8		EXPANSION PEDESTAL ASSY.			
	8	MD	Bar 8x1 1/2	1.8		
	8	MD	Bar 7x2	1.0		
	8	MD	Bar 7x2	0.11		
	8	SP	Bar 6x2	0.8		
	32	FBI	Bar 2x1	0.54		
	16	d1	Bar 1" d	0.12		
	16	KD	Bar 1" d	0.7		
ABI	16		Bar 1" d	1.3		Swaged
	32	shop	1" Hex Nuts			
Field	16		1" Washer			Std. Washer - 2 1/2" O.D. x 3/8" hole with 1/16" hole
FPI	8		Pad 8x1 1/2	1.8		Fabco Pad "SA47" Req. No. 3113
<p>Allowance to be made for Machining when cutting above plates.</p> <p>ITEM PROJECT NO. I-95-9(41) 266</p> <p>Sole plates "SP" to be field welded to stringers.</p> <p>Bearing material to be ASTM-A36, Anchor Bolts to be A7, A36, or A307.</p> <p>All welds to be made with E70 Electrodes.</p> <p>SHOP CONNECTIONS: Welded</p> <p>FIELD CONNECTIONS: As Noted</p> <p>HOLES: As Noted</p> <p>PAINT: Red lead per Maine S.M.C. Spec. and as noted.</p>						
<p>BEARING PEDESTAL DETAIL</p> <p>Bancroft &amp; Martin Inc.</p> <p>South Portland 1, Maine</p> <p>CRYSTAL STATION ROAD BRIDGE</p> <p>CRYSTAL &amp; SHERMAN, MAINE</p> <p>CUSTOMER: REED &amp; REED</p> <p>DESIGNER: M.S.H.C. BRIDGE DIV.</p> <p>3-S.H.C. 2-2-67</p> <p>3-CUST. 2-2-67</p> <p>4-PORT. REG. 12-5-66</p> <p>3-FA. 12-5-66</p> <p>DRAWN: 12-5-66 C.J.M.</p> <p>REVISION:</p> <p>REVISION:</p> <p>REVISION:</p> <p>ORDER NO. VERBAL DWG. NO. B66-247</p>						

100-147

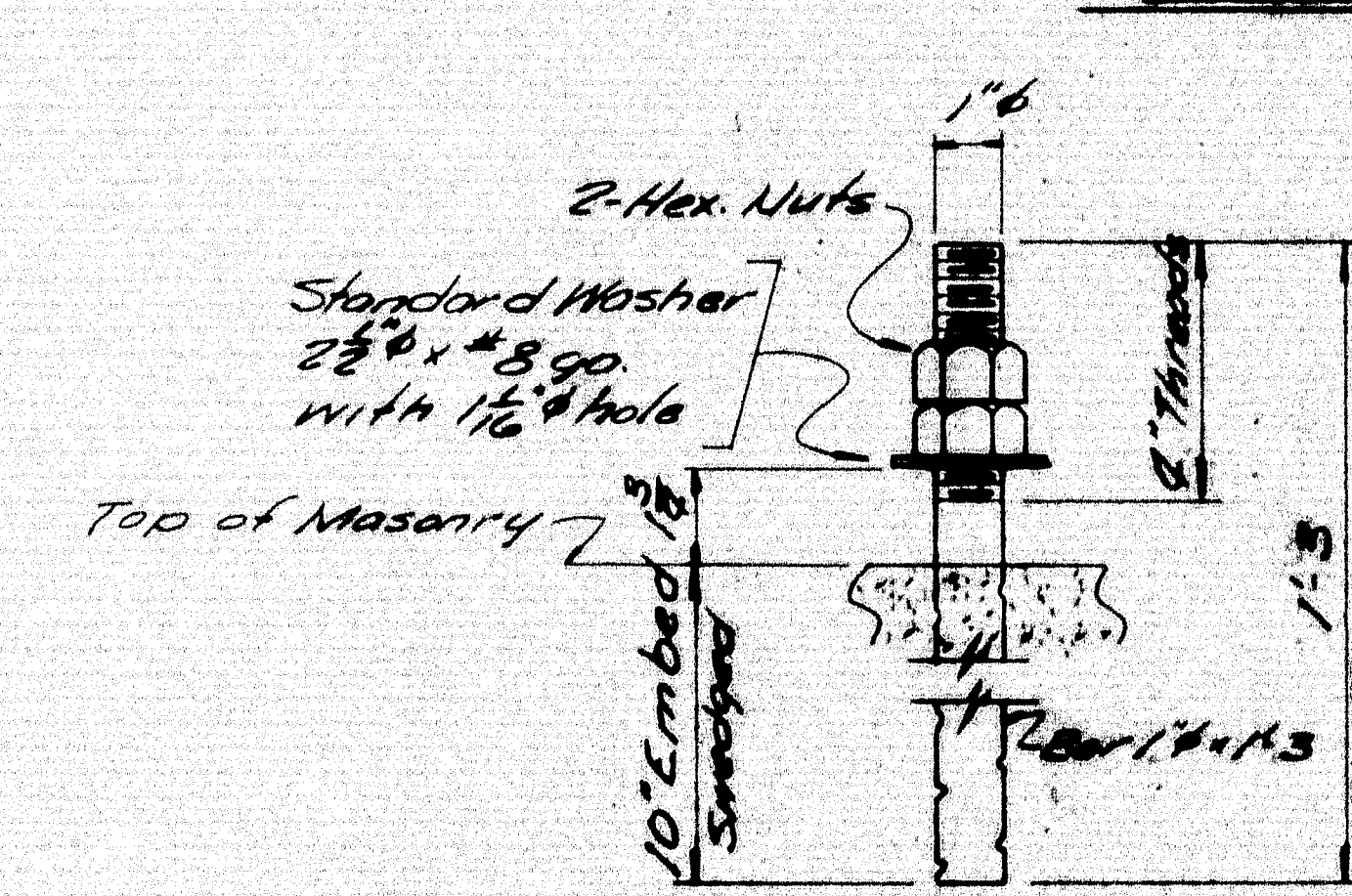




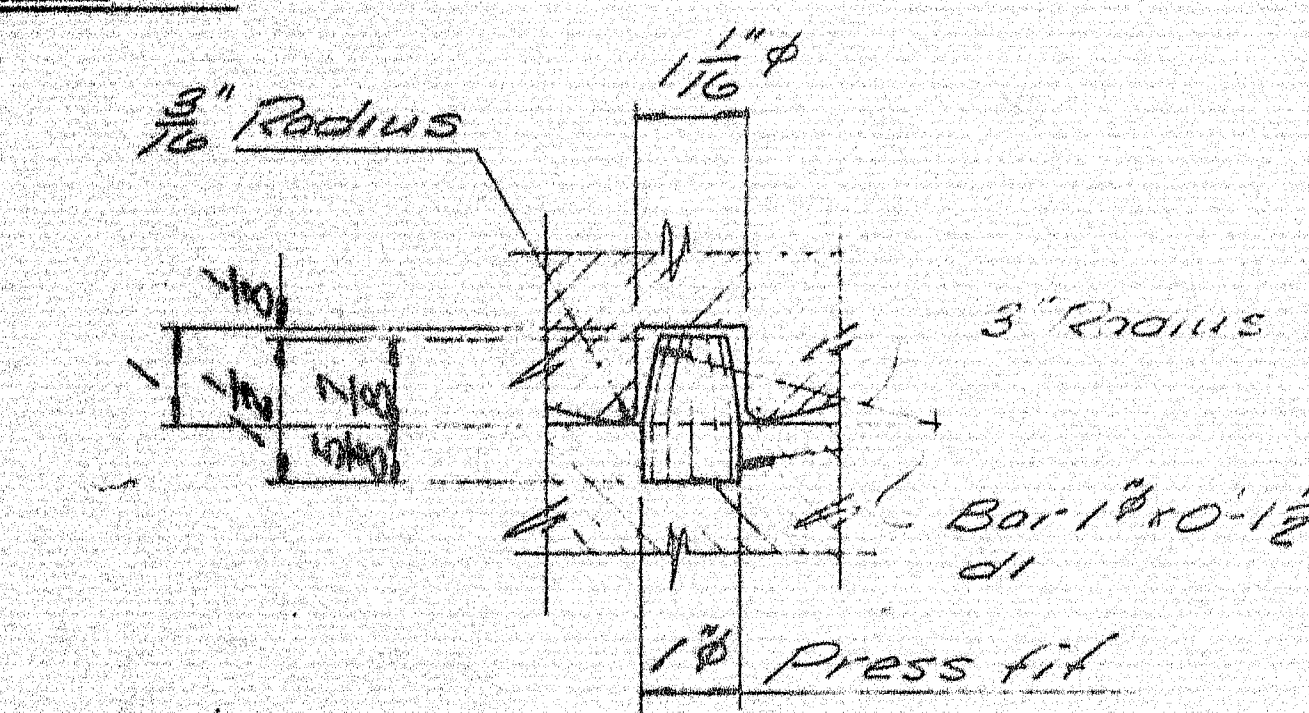




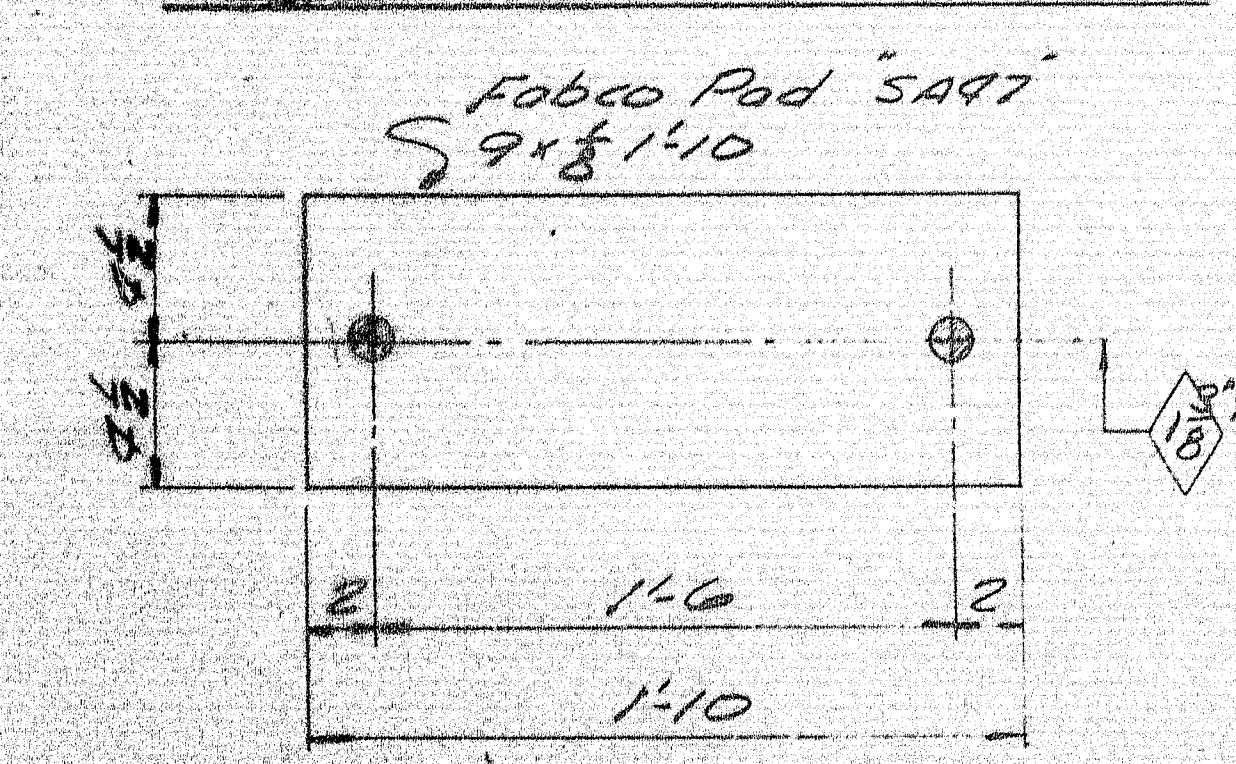
**EXPANSION PEDESTAL EPC-4**  
8 - REQ'D.



**ANCHOR BOLT ABI**  
16 - REQ'D.



**DOWEL DETAIL**

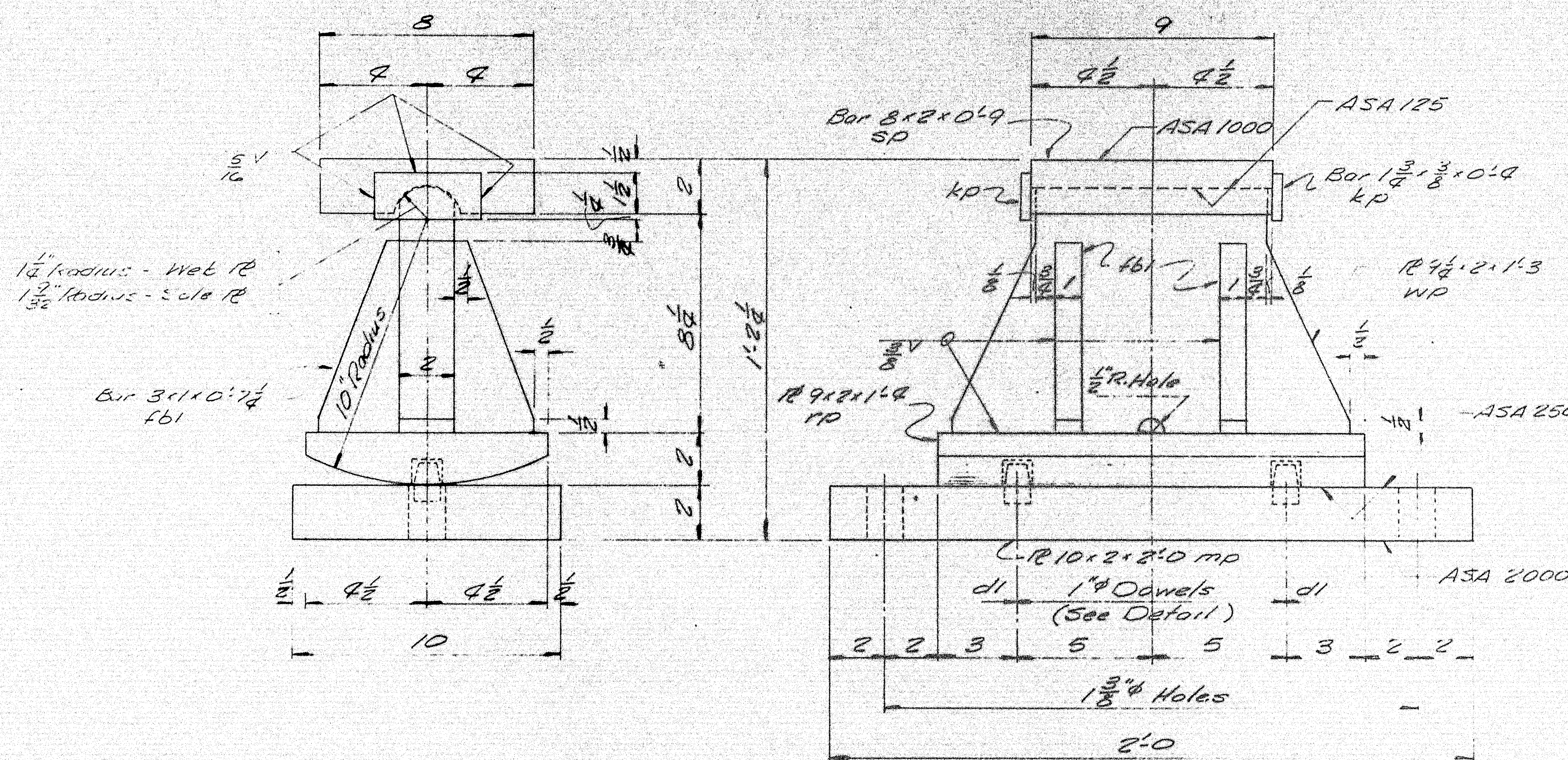


**FABCO PAD "SA47"**  
FP2 8 - REQ'D.

**PAINT NOTE:**  
No paint on top of sole plates "sp" and 1 inch down from top on sides, coat with boiled linseed oil.  
No paint on surface with ASA 125 finish, coat with mixture of white lead and tallow.  
No paint on Anchor Bolts - Oil them.

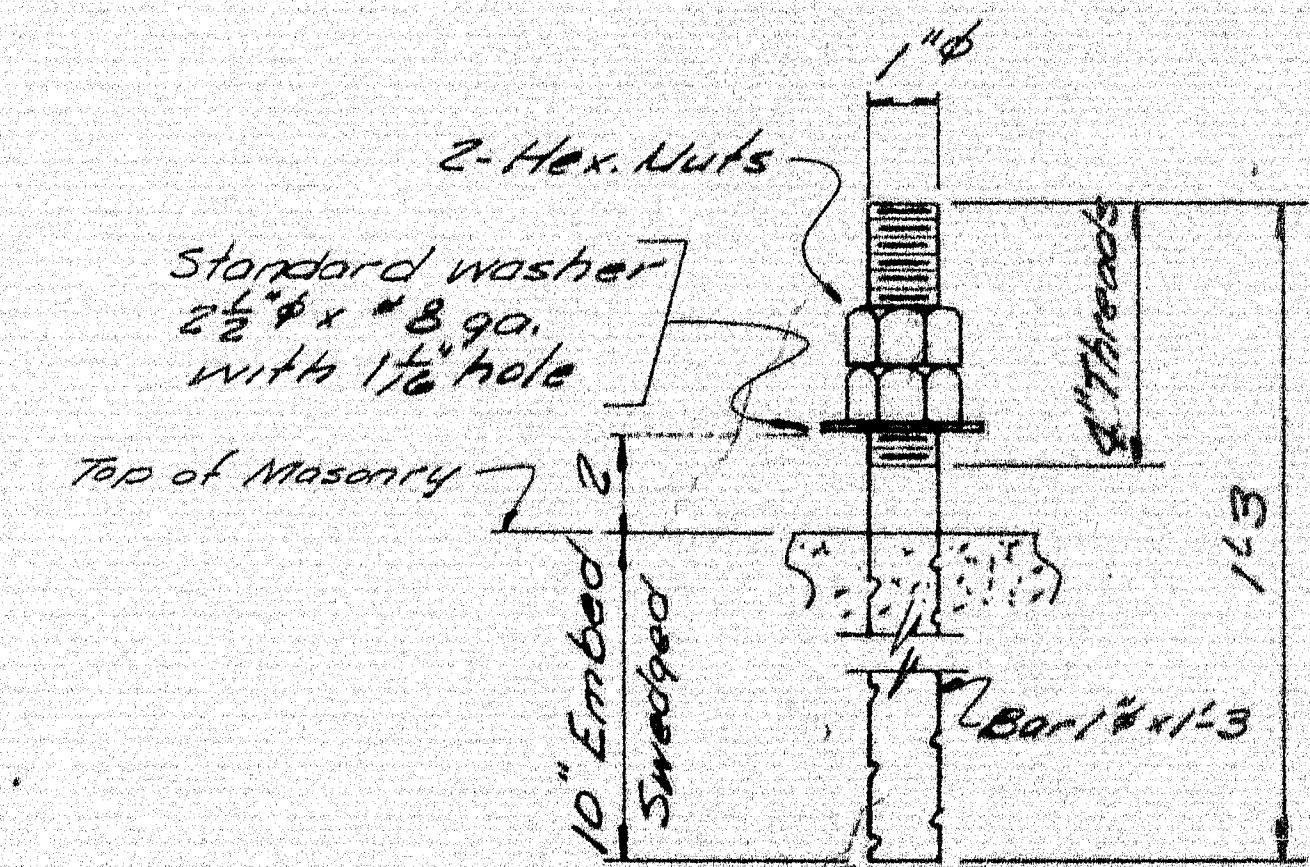
SHIP		BILL OF MATERIAL				DWG. NO. B66-247-52
MARK	NO.	MARK	SHAPE	LENGTH	WT.	REMARKS
ERCA	8		EXPANSION PEDESTAL ASS'Y.			
	8	mp	R 9 x 1 3/8	1 10		
	8	kp	Bar 8 x 2	1 2		
	8	kp	R 9 x 2	1 1		
	8	sp	Bar 7 x 2	0 8		
	32	fbl	Bar 2 1/2 x 1	0 7 1/2		
	16	dl	Bar 1 inch	0 1 1/2		
	16	kp	Bar 1 3/8 x 3/8	0 4		
ABI	16		Bar 1 inch	1 3		Swedged
	32	shop	1 inch Hex Nut			
Field	16		1 inch Washer			Std Washer - 2 1/2 inch O.D. x 1/2 inch Bore with 1 1/2 inch hole
FP2	8		Rad 9 x 1 1/2	1 10		Fabco Pad "SA47" Req'd. 3113
Allowance to be made for machining when cutting above plates.						
ITEM PROJECT NO. I-95-9(41)266						
Sole plates "sp" to be field welded to stringers.						
Bearing material to be ASTM A36. Anchor bolts to be A7, A36, or A307.						
All welds to be made with E70 Electrodes.						
SHOP CONNECTIONS: Welded						
FIELD CONNECTIONS:						
HOLES: As noted						
PAINT: Red lead per Maine S.H.C. Spec., and as noted.						
BEARING PEDESTAL DETAIL						
Bancroft & Martin Inc.						
South Portland 7, Maine						
CRYSTAL STATION ROAD BRIDGE						
CRYSTAL & SHERMAN, MAINE						
CUSTOMER REED & REED						
DESIGNER M.S.H.C. BRIDGE DIV.						
3-S.H.C. 2-2-67						
3-CUST. 2-2-67						
4-F.B.T. Reg. 12-5-66						
3-F.A. 12-5-66						
DRAWN	12-5-66	C.J.M.				
REVISION						
REVISION						
REVISION						
ORDER NO. VERBAL					DWG. NO. B66-247-52	





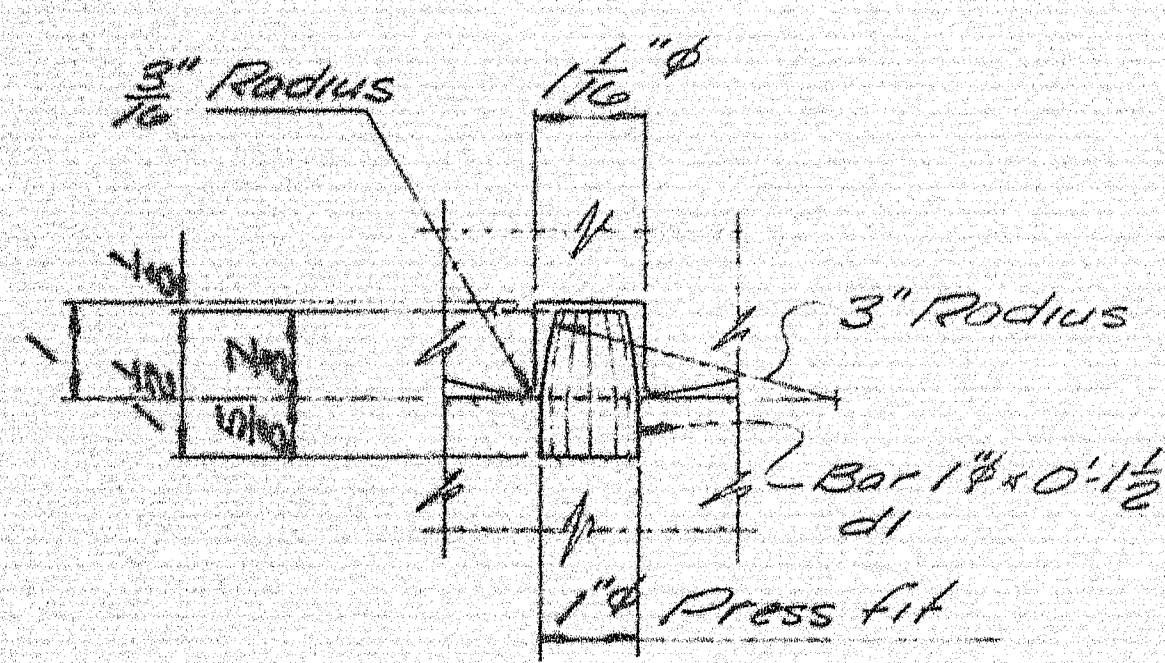
**EXPANSION PEDESTAL EPC-5**

**8- REQ'D.**

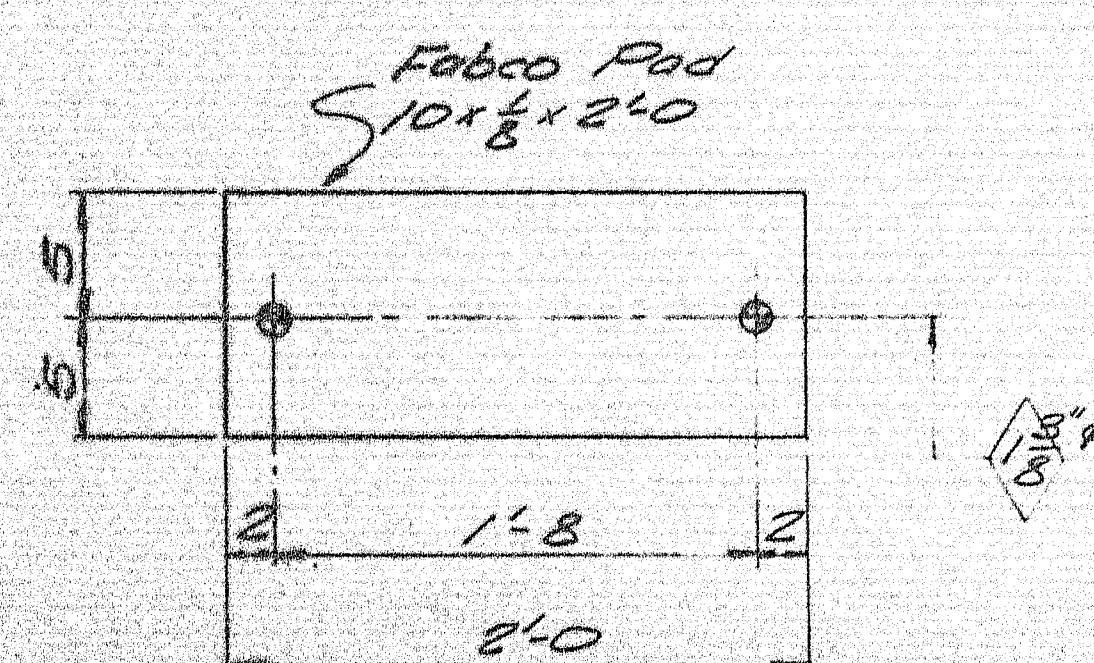


**ANCHOR BOLT ABI**

**16- REQ'D.**



**DOWEL DETAIL**



**FABCO "SA47" PAD**

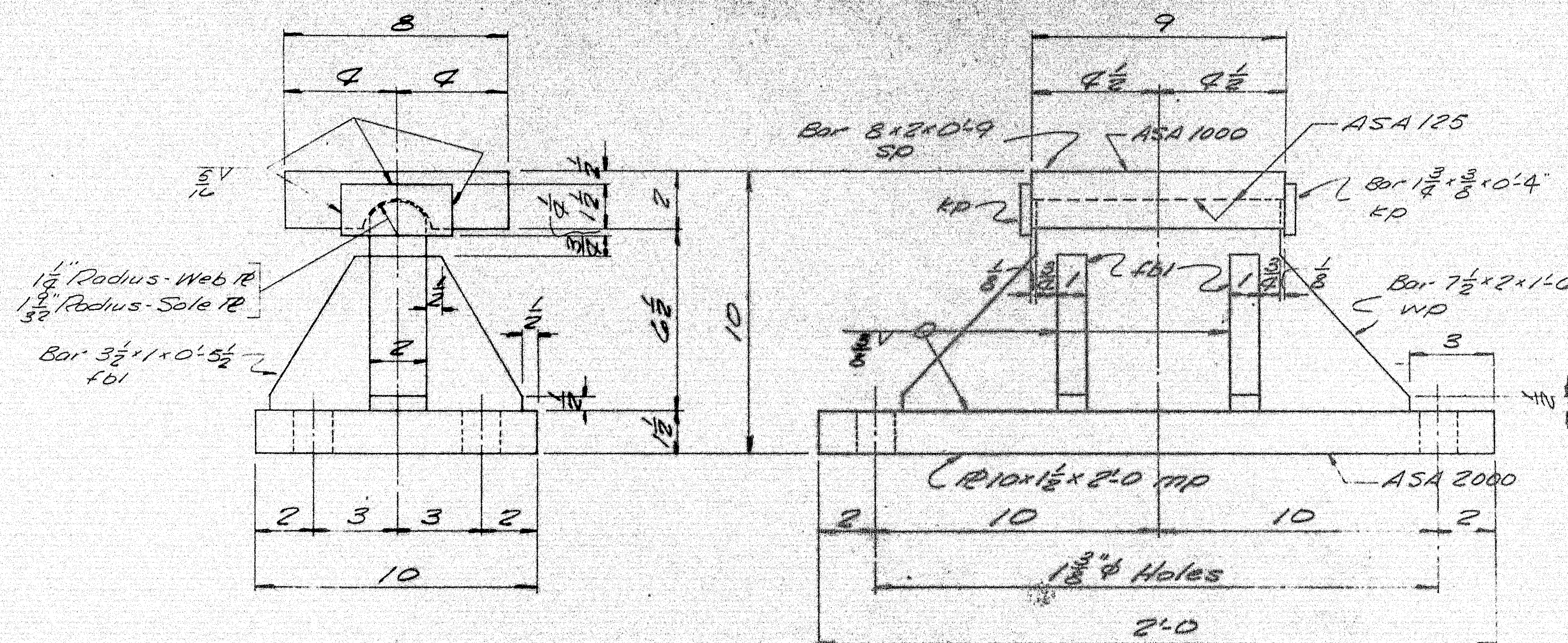
**FP3 8- REQ'D.**

**PAINT NOTE:**

No paint on top of sole plates "sp" and 1" down from top on sides, coat with boiled linseed oil.  
No paint on surface with ASA 125 finish, coat with mixture of white lead and tallow.  
No paint on Anchor bolts - Oil thos.

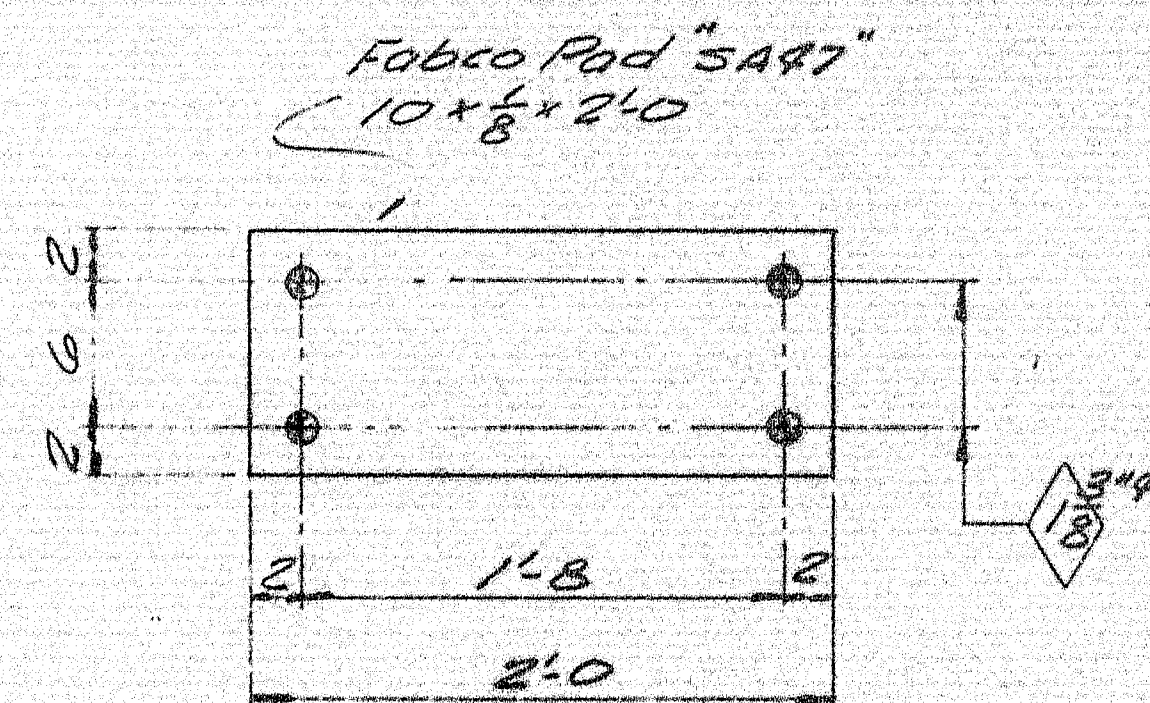
SHIP		BILL OF MATERIAL				DWG. NO. <u>B66-247-53</u>
MARK	NO.	MARK	SHAPE	LENGTH	WT.	REMARKS
EPC5	8		EXPANSION PEDESTAL ASSY.			
	8	mp	R10x2	2 0		
	8	rp	R9x2	1 4		
	8	wp	R9 1/2 x 2	1 3		
	8	sp	Bar 8x2	0 9		
	32	fbi	Bar 3x1	0 7 1/2		
	16	di	Bar 1"φ	0 1 1/2		
	16	kd	Bar 1 3/8 x 3/8	0 4		
ABI	16		Bar 1"φ	1 3		Sweehead
	32	shgc	1" <sup>rod</sup> <sub>nut</sub>			
Field	16		1" washer			Std. Washer - 2 1/2" O.D. x "sq. with 1 1/2" hole.
FP3	8		Red 11 x 1/8	2 0		"F-1000 Red" SAE7" [Req. LD. 3113





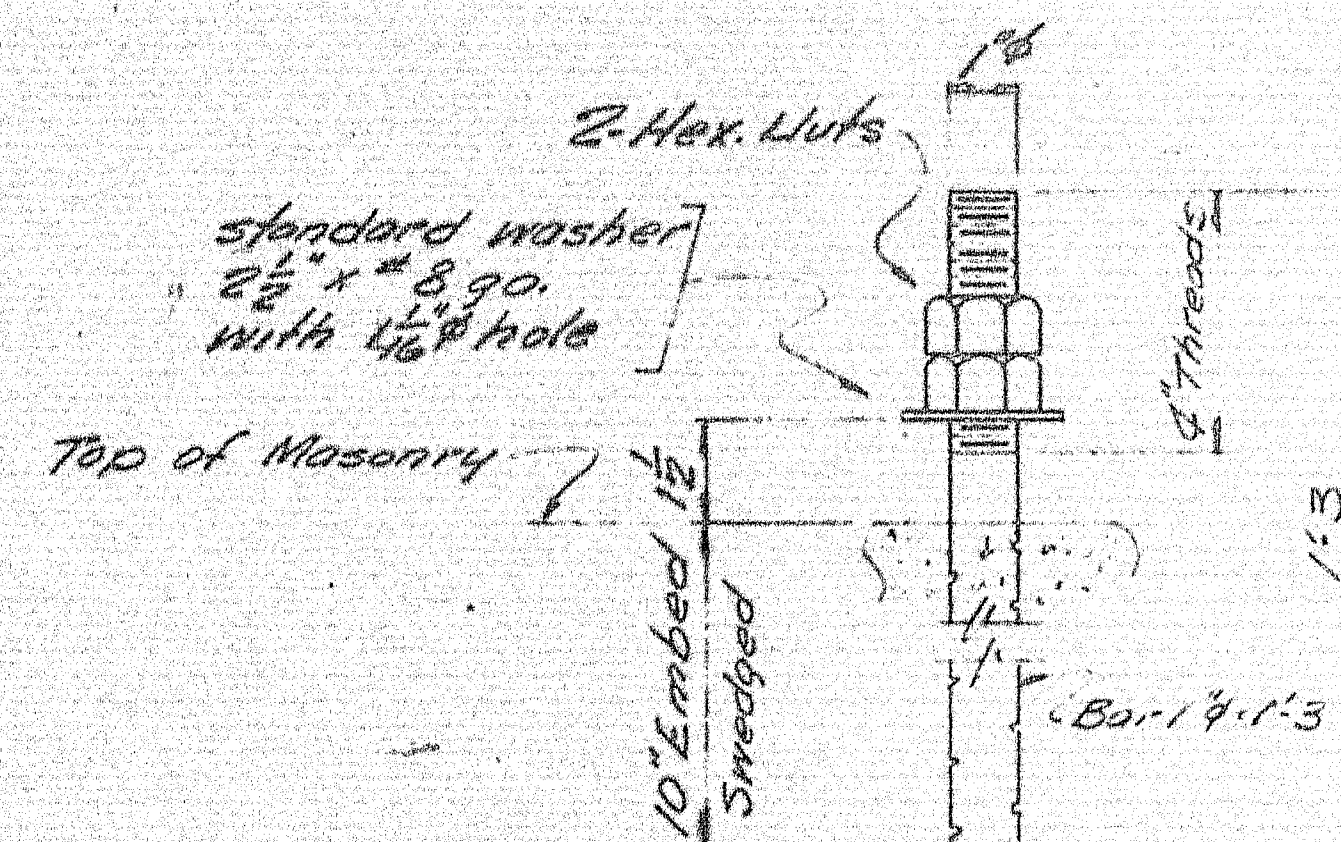
FIXED PEDESTAL FPC-3

4- REQ'D.



FABCO "SA47" PAD

FPA 4-REQ'D.



ANCHOR BOLT ABI

16- REQ'D.

PAINT NOTE:

No paint on top of sole plates "sp" and 1" down from top on sides, coat with boiled linseed oil.  
No paint on surface with ASA 125 finish coat with mixture of white lead and tallow.  
No paint on anchor bolts - oil them.

SHIP		BILL OF MATERIAL				DWG. NO. <u>B66-247-54</u>
MARK	NO.	MARK	SHAPE	LENGTH	VT.	REMARKS
FPC3	4		FIXED PEDESTAL ASS'Y.			
	4	mp	10' x 1 1/2	2'0		
	4	wd	Bar 7 1/2 x 2	1'6		
	4	sp	Bar 8 x 8	0'9		
	8	kp	Bar 1 1/2 x 3/8	0'4		
	16	fbl	Bar 3 1/2 x 1	0'5 1/2		
ABI	16		Bar 1 1/2	1'3		Swaged
	32	shop	1" Hex Nut			
Field	16		1" washer			Std. washer 2 1/2" O.D. x 8ga. with 1 1/2" hole
FPA	4		Pad 10' x 6'	2'0		Fabco Pad "SA47" Req. No. 3113

Allowance to be made for machining when cutting above plates.

ITEM PROJECT NO. I-95-9(41)266

Sole plates "sp" to be field welded to stringers.

Bearing material to be ASTM A36. Anchor bolts to be A7, A36, or A307. All welds to be made with E70 Electrodes.

SHOP CONNECTIONS: welded

FIELD CONNECTIONS:

HOLES: as noted

PAINT: Red lead per Maine S.H.C. spec., and as noted.

BEARING PEDESTAL DETAIL

Bancroft & Martin Inc.

South Portland 7, Maine

CRYSTAL STATION ROAD BRIDGE

CRYSTAL & SHERMAN, MAINE

CUSTOMER: FEED & FEED

DESIGNER: MS.H.C. BRIDGE DIV.

ORDER NO. VERBAL

DWG. NO. B66-247-54

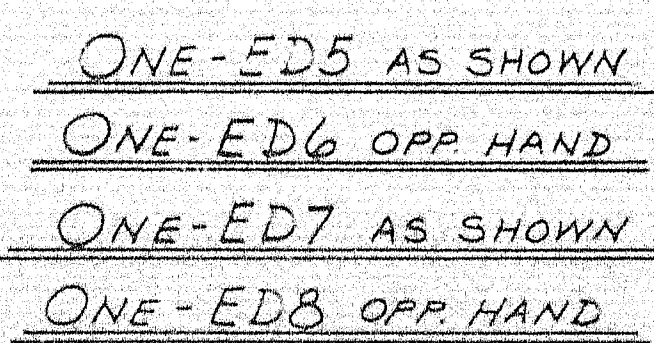
3-S.H.C. 2-2-67  
3-CUST. 2-2-67  
5-Per. Reg. 12-5-66  
3-F.A. 12-5-66  
DRAWN 12-5-66 C.J.M.  
REVISION  
REVISION  
REVISION

100-150





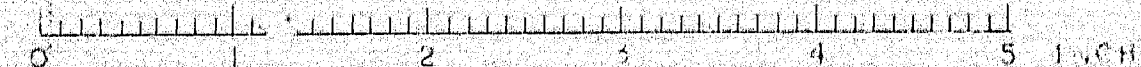




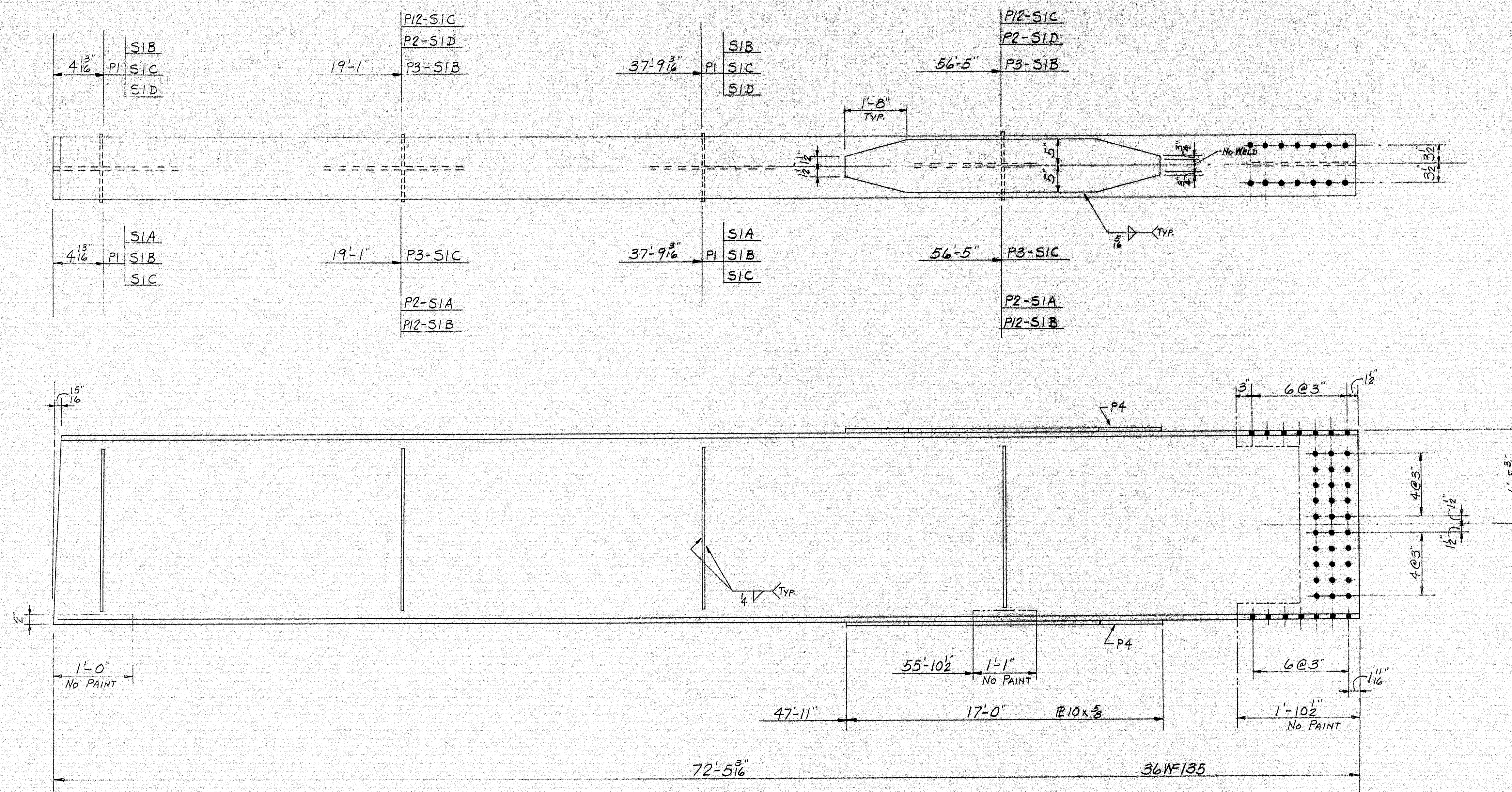
SHOP CONNECTIONS: *WELD E70 LOW-HYDROGEN*  
FIELD CONNECTIONS:  
HOLES:  
PAINT: *STATE OF MAINE SPECS*

APP'D AS NOTED. PROJ. No. I-95-9(41)266

APP'D AS NOTED		FIG. NO. 1-737(4)1266	
SIDEWALK EXPANSION DAMS			
PRINT ISSUED		Bancroft & Martin Inc. Brewer, Maine	
3	S.H.C. 1-30-67	CRYSTAL STATION ROAD BRIDGE	
3	CUST. 1-30-67	CRYSTAL & SHERMAN, MAINE	
5	S.H.P. 1-30-67		
3	FA. 1-19-67		
DRAWN	1-10-67 C.J.M.	CUSTOMER	REED & REED
REVISION		DESIGNER	M.S.H.C.
REVISION		ORDER	VERBAL
REVISION		DWG.	B66-247-56



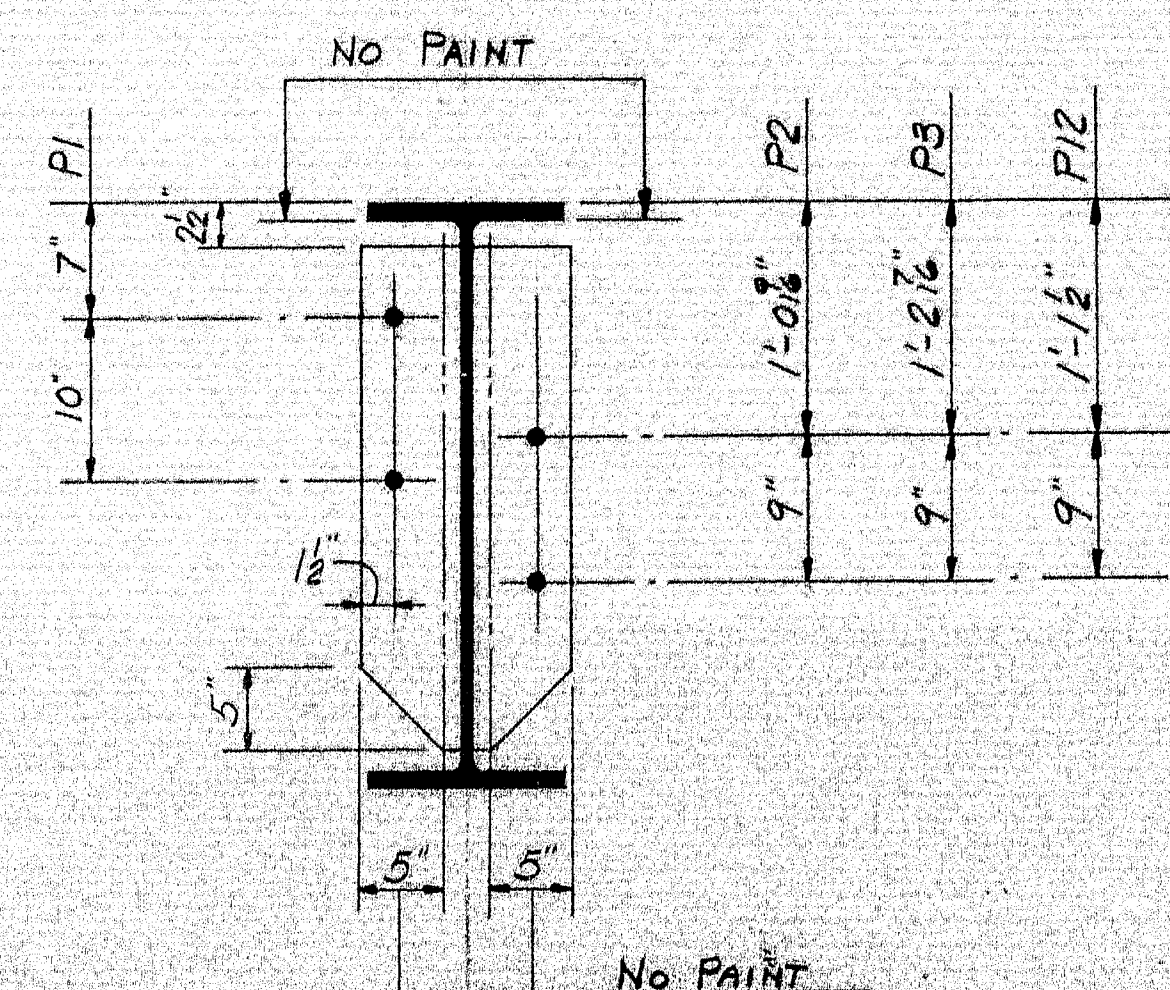




ONE EACH  
SIA-SIB-SIC-SID

PLACE ANY NATURAL  
CAMBER UP.

THIS END ABUT. #1



MATCH THIS END WITH  
STRINGERS MARKED S2

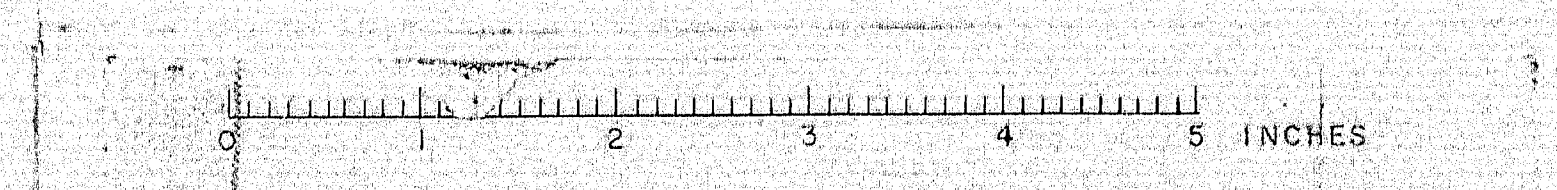
SHIP		BILL OF MATERIAL				DWG. B66-247-57
MARK	NO.	MARK	SHAPE	LENGTH	WT.	REMARKS
SIA	1		36" WF 135	72' 5 3/8"		A36
SIB	1			72' 5 3/8"		
SIC	1			72' 5 3/8"		
SID	1		do	72' 5 3/8"		do
	8	P4	R 10 x 3/8	17' 0"		A36
	12	P1	R 6 x 3/8	2' 7"		
	4	P2	do	2' 7"		
	4	P3	do	2' 7"		
	4	P12	do	2' 7"		do
FIELD	1184		3/8" H.S. BOLT	0' 3/4"		WEB BOLTS A325
do	960		do	0' 3/4"		FLANGE BOLTS A325
do	2366		3/8" H.S. WASHERS			
do	290		3/8" M. BOLT	0' 2"		
do	580		3/8" STD. WASHER			

SHOP CONNECTIONS: WELD E70 LOW-HYDROGEN  
FIELD CONNECTIONS: 3/8" H.S. BOLTS  
HOLES: 1/8" U.N.  
PAINT: STATE OF MAINE SPEC'S.

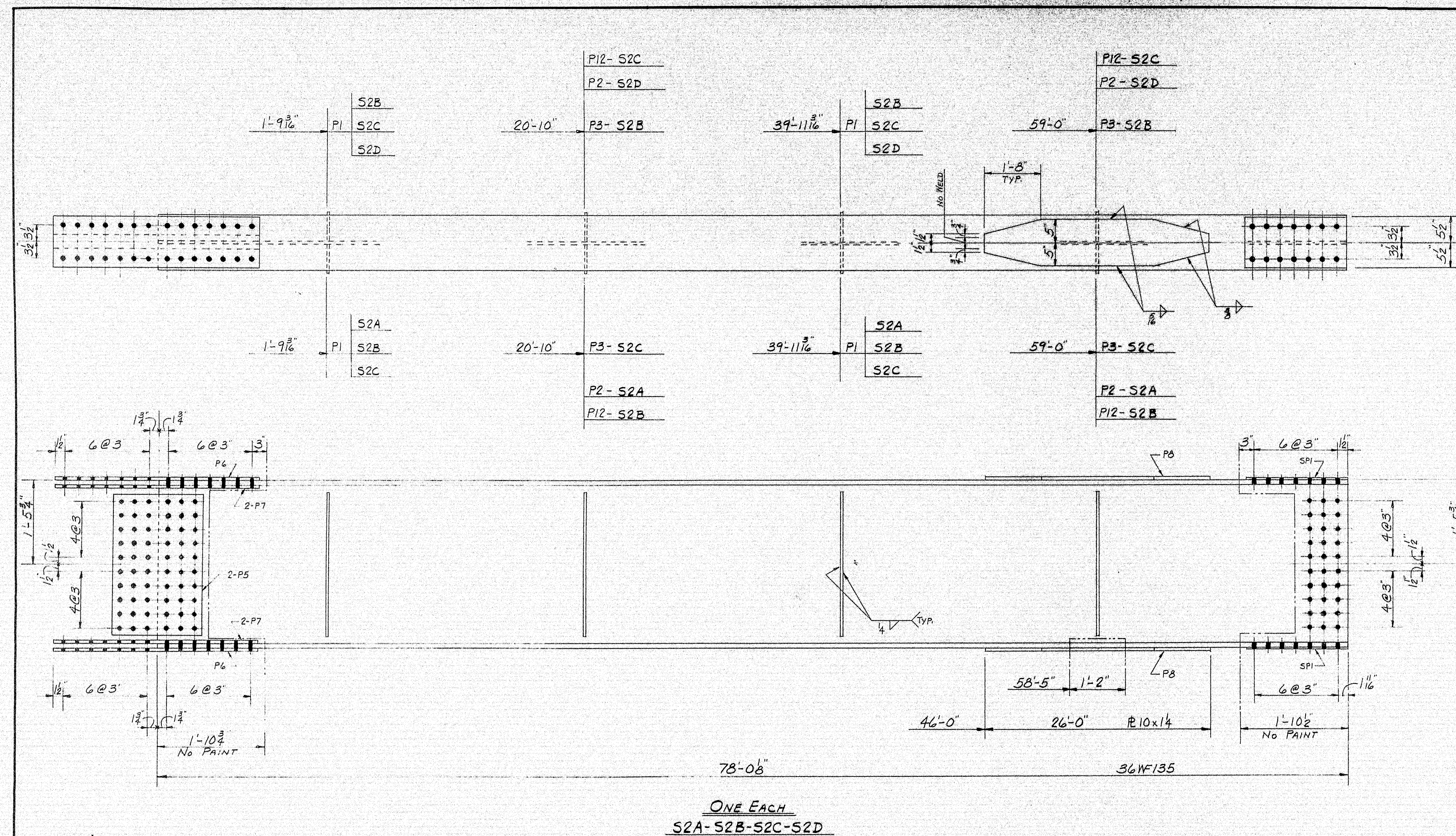
PROJ. NO. I-95-9(41) 266

PRINT ISSUE		STRINGERS SPAN #1	
		Bancroft & Martin Inc. Brewer, Maine	
3	S.H.C. 1-30-67	CRYSTAL STATION ROAD BRIDGE	
3	CUST. 1-30-67	CRYSTAL & SHERMAN, MAINE	
6	SHOP 1-30-67		
3	P.A. 1-19-67	CUSTOMER REED & REED	
DRAWN	1-11-67 C.J.M.	DESIGNER M.S.H.C.	
REVISION		ORDER VERBAL	
REVISION		DWG. B66-247-57	

100-153

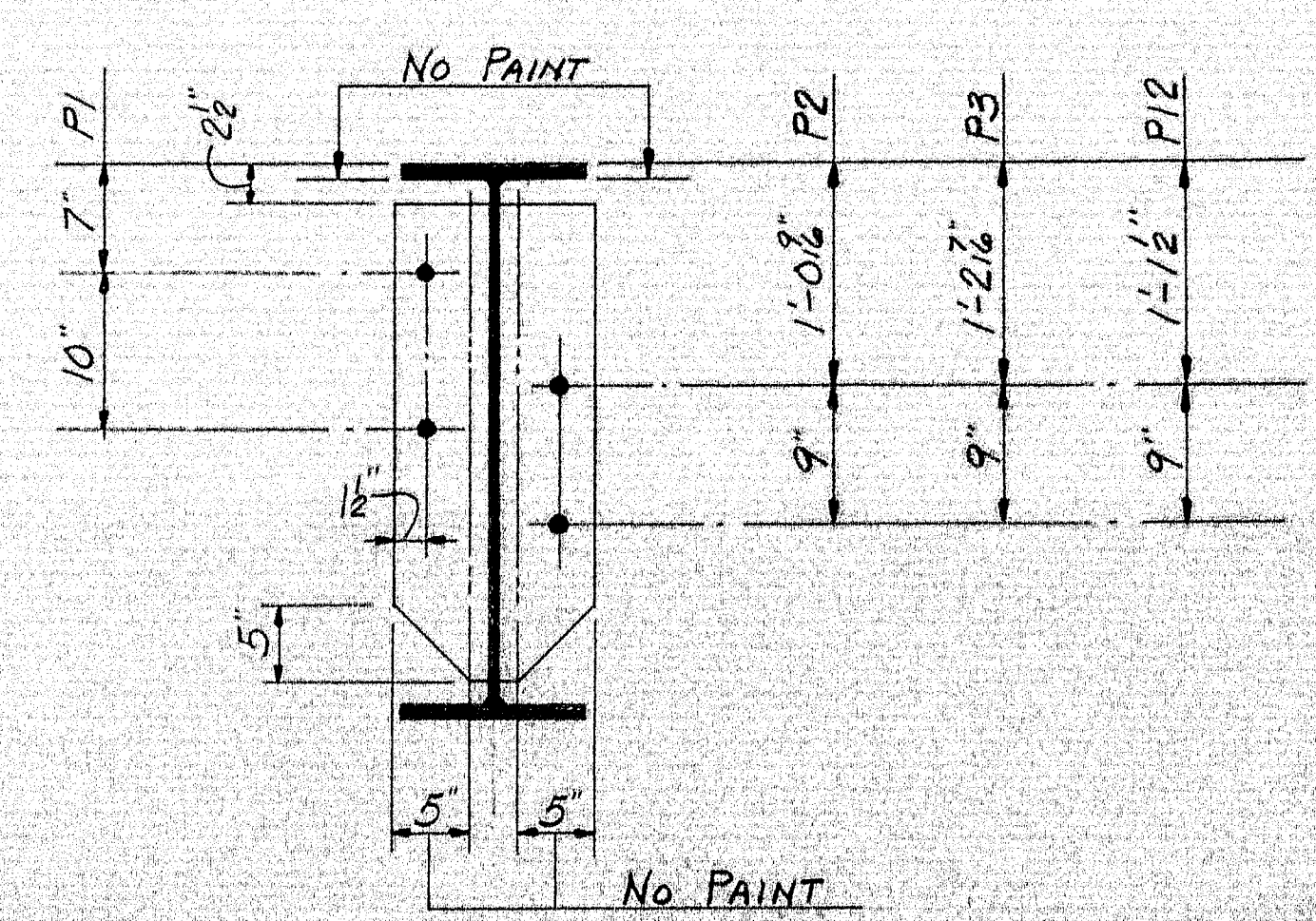






PLACE ANY NATURAL  
CAMBER UP.

MATCH THIS END WITH  
STRINGERS MARKED "SI"



MATCH THIS END WITH  
STRINGERS MARKED "S3"

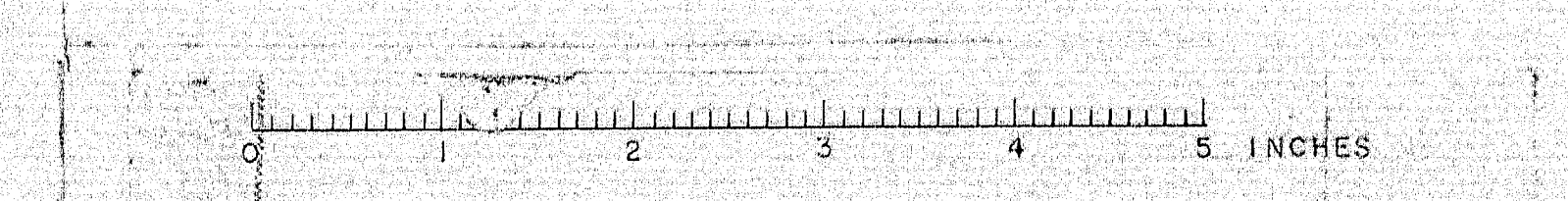
SHIP		BILL OF MATERIAL				DWG. B66-247-58
MARK	NO.	MARK	SHAPE	LENGTH	WT.	REMARKS
S2A	1		36WF135	78' 0"		A36
S2B	1			78' 0"		
S2C	1			78' 0"		
S2D	1			78' 0"		
	4	P12	R6x3/8	2' 7"		do
	12	P1	R6x3/8	2' 7"		A36
	4	P2	do	2' 7"		
	4	P3	do	2' 7"		
	8	P5	R18x1/2	2' 6"		
	8	P6	R11x1/2	3' 6"		
	16	P7	R4x3/8	3' 6"		
	8	P8	R10x1/4	26' 0"		
	8	SPI	R11x1/4	1' 9"		do
	32	SHOP	3/8" H.S. BOLT	0' 3/4"		FLANGE BOLTS A325
	8	SHOP	do	0' 3/4"		WEB BOLTS "

SHOP CONNECTIONS: WELD E70 LOW-HYDROGEN  
FIELD CONNECTIONS: 3/8" H.S. BOLTS  
HOLES: 15/16" U.N.  
PAINT: STATE OF MAINE SPEC.

PROJ. No. I-95-9(41)266

PRINT ISSUE				STRINGERS SPAN #2	
				Bancroft & Martin Inc. Brewer, Maine	
3	S.H.C.	1-30-67		CRYSTAL STATION ROAD BRIDGE	
3	CUST.	1-30-67		CRYSTAL & SHERMAN, MAINE	
6	SHOP	1-30-67			
3	F.A.	1-19-67		CUSTOMER REED & REED	
DRAWN	1-12-67	C.J.M.		DESIGNER M.S.H.C.	
REVISION					
REVISION					
REVISION					
				ORDER VERBAL	DWG. B66-247-58

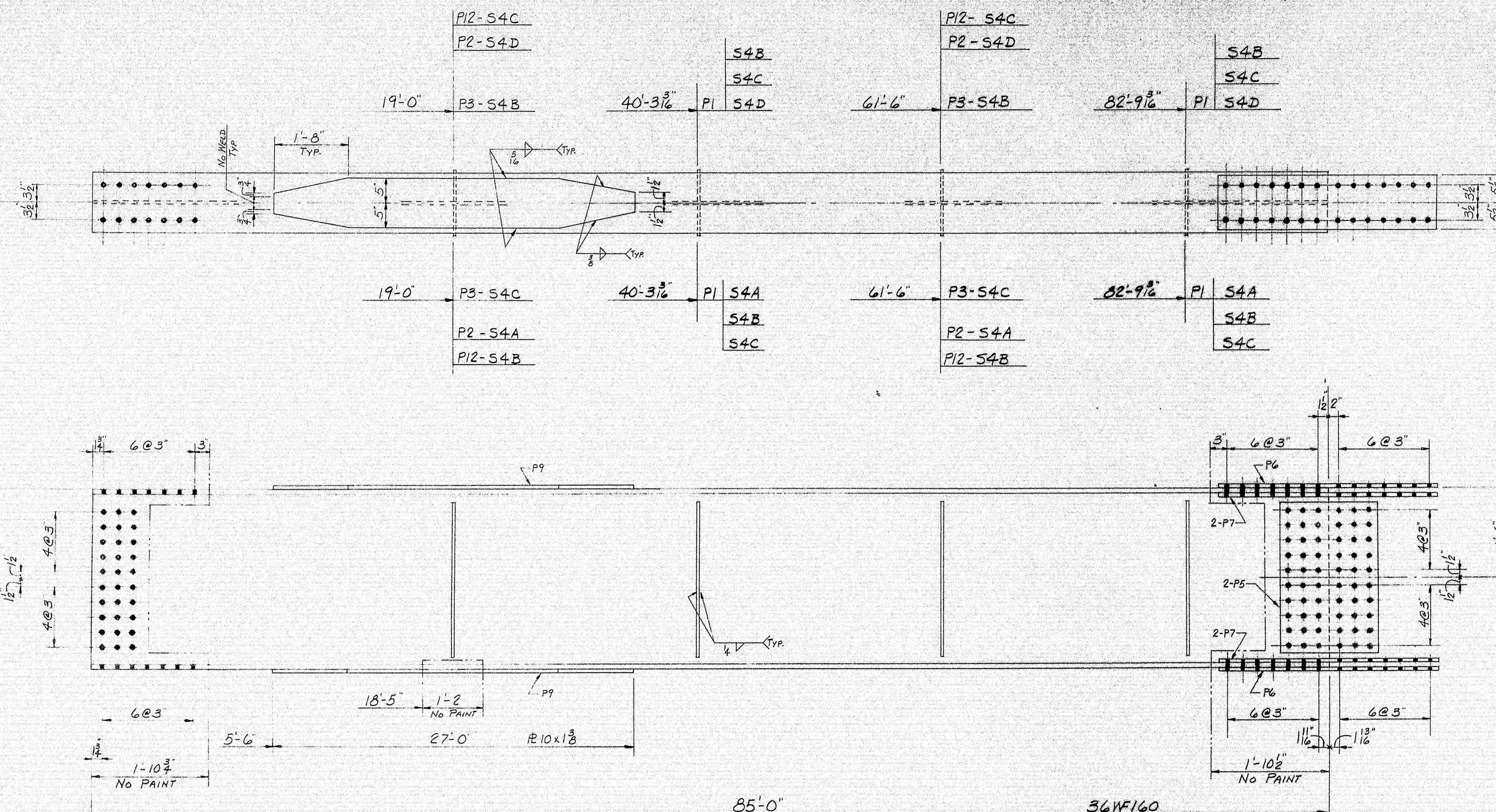
100-154







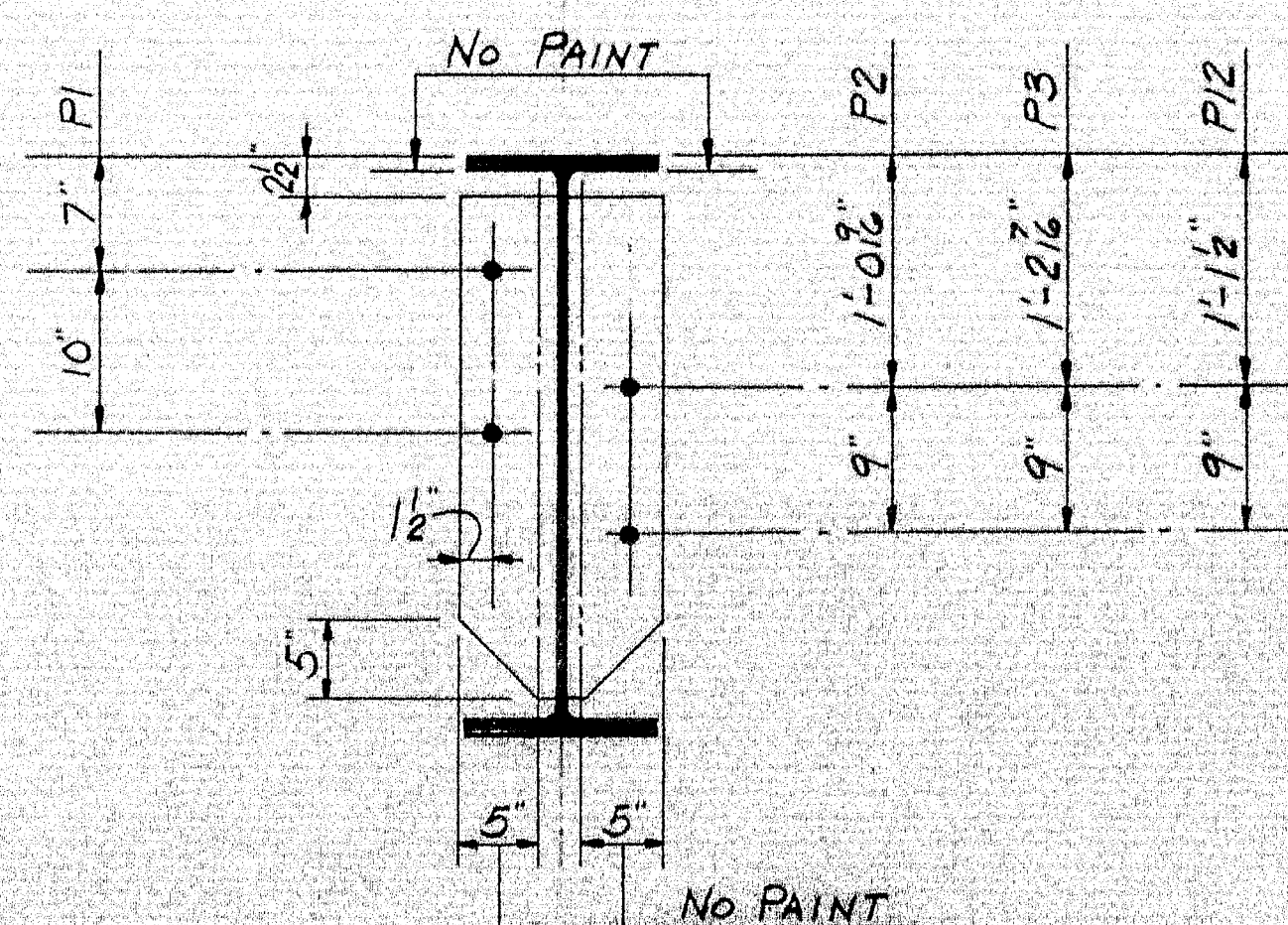




ONE EACH  
S4A-S4B-S4C-S4D

PLACE ANY NATURAL  
CAMBER UP

MATCH THIS END WITH  
STRINGERS MARKED "S3"



MATCH THIS END WITH  
STRINGERS MARKED "S5"

SHIP		BILL OF MATERIAL				DWG. B66-247-S10
MARK	NO.	MARK	SHAPE	LENGTH	WT.	REMARKS
S4A	1		36'11/16"	85' 0"		A36
S4B	1			85' 0"		
S4C	1			85' 0"		
S4D	1		do	85' 0"		do
	4	P12	R6 x 3/8	2' 7"		A36
	12	P1	R6 x 3/8	2' 7"		A36
	4	P2	do	2' 7"		
	4	P3	do	2' 7"		
	8	P5	R18 x 1/2	2' 6"		
	8	P6	R11 x 1/2	3' 6"		
	16	P7	R4 x 3/8	3' 6"		
	8	P9	R10 x 1 1/8	27' 0"		do
	32	SHOP	3" H.S. BOLTS	0' 3 3/4"		FLANGE BOLTS A325
	8	SHOP	do	0' 3 3/4"		WEB "

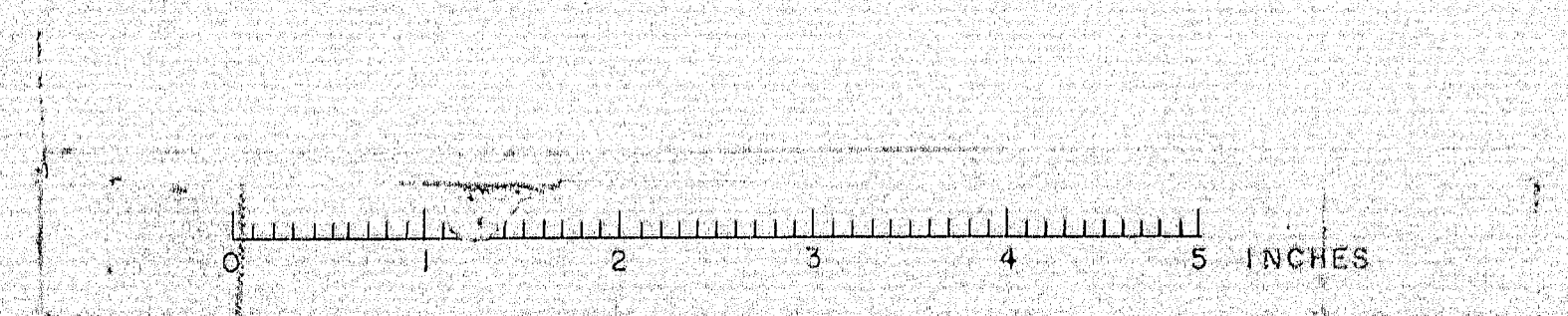
SHOP CONNECTIONS: WELD E70 LOW-HYDROGEN  
FIELD CONNECTIONS: 3" H.S. BOLTS  
HOLES: 1 1/2" U.N.  
PAINT: STATE OF MAINE SPEC'S.

PROJ. NO. I-95-9(4) 266

STRINGERS SPAN #4

PRINT ISSUE		Bancroft & Martin Inc. Brewer, Maine	
3	S.H.C. 1-30-67	CRYSTAL STATION ROAD BRIDGE	
3	CUST. 1-30-67	CRYSTAL & SHERMAN, MAINE	
6	SHOP 1-30-67	CUSTOMER REED & REED	
3	FA. 1-19-67	DESIGNER M.S.H.C.	
DRAWN 1-16-67 C.J.M.		ORDER VERBAL	
REVISION		DWG. B66-247-S10	
REVISION			

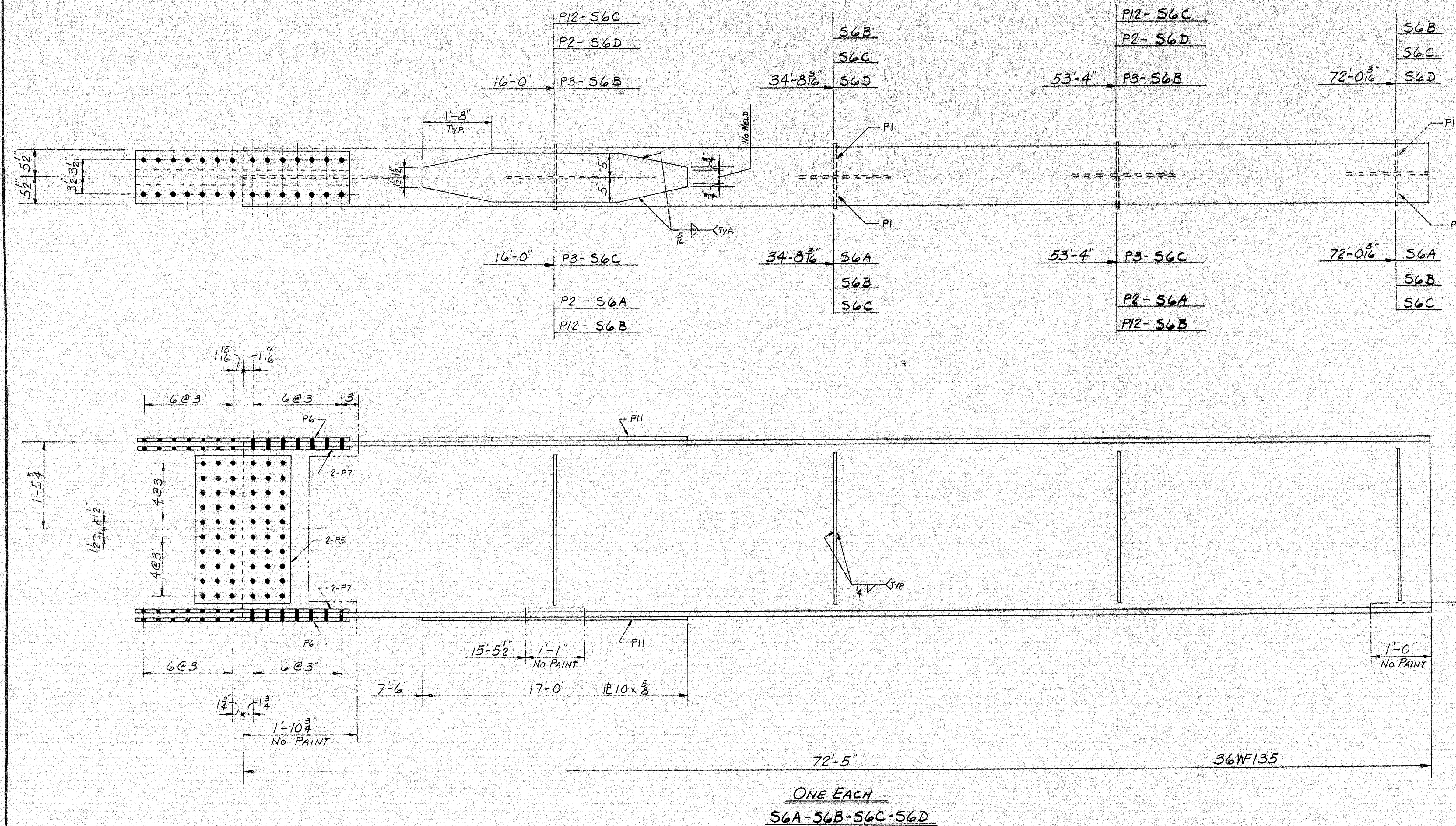
100-156





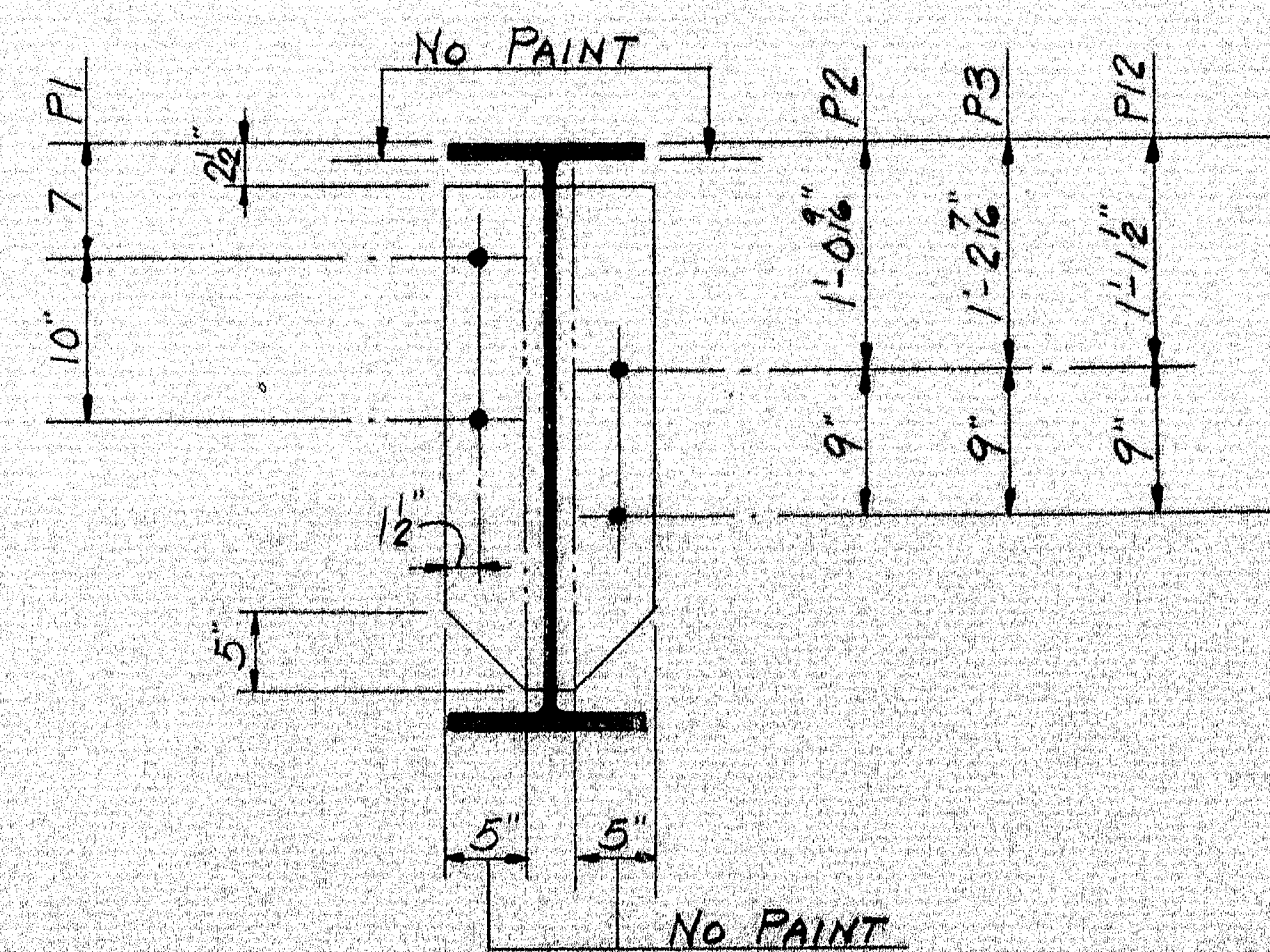






PLACE ANY NATURAL  
CAMBER UP.

MATCH THIS END WITH  
STRINGERS MARKED "S5"



THIS END ABUT. #2

SHIP		BILL OF MATERIAL				DWG. B66-247-S12
MARK	NO.	MARK	SHAPE	LENGTH	WT.	REMARKS
S6A	1		36WF135	72 5		A36
S6B	1			72 5		
S6C	1			72 5		
S6D	1		do	72 5		do
	12	P1	R6x3	2 7		A36
	4	P2	do	2 7		
	4	P3	do	2 7		
	8	P5	R18 1/2 x 7/16	2 6		
	8	P6	R11 x 7/16	3 62		
	16	P7	R4 x 3/8	3 62		
	8	P11	R10 x 3/8	17 0		do
	32	SHOP	3/8 H.S. BOLT	0 34		FLANGE BOLTS A325
	8	SHOP	do	0 34		WEB "
	4	P12	R6 x 3/8	2 7		A36

SHOP CONNECTIONS: WELD E70 LOW-HYDROGEN  
FIELD CONNECTIONS: 3/8 H.S. BOLT  
HOLES: 15/16" U.N.  
PAINT: STATE OF MAINE SPEC'S.

PROJ. NO. I-95-9(41) 266

STRINGERS SPAN #6			
PRINT ISSUE		Bancroft & Martin Inc. Brewer, Maine	
3	S.H.C.	1-30-67	CRYSTAL STATION ROAD BRIDGE
3	CUST.	1-30-67	CRYSTAL & SHERMAN, MAINE
6	SHOP	1-30-67	
3	F.A.	1-19-67	CUSTOMER REED & REED
DRAWN	1-19-67	C.J.M.	DESIGNER M.S.H.C.
REVISION			
REVISION			
ORDER	VERBAL	DWG. B66-247-S12	

100-158

